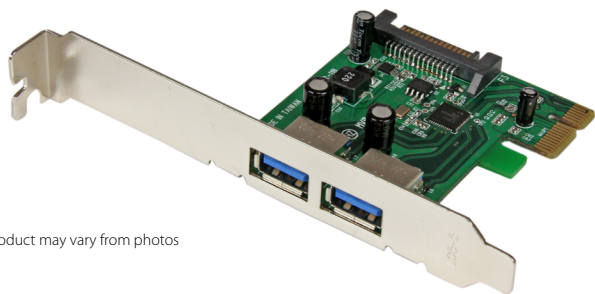


## 2 Port PCI Express SuperSpeed USB 3.0 Card with SATA Power

PEXUSB3S24

DE: Bedienungsanleitung - de.startech.com  
 FR: Guide de l'utilisateur - fr.startech.com  
 ES: Guía del usuario - es.startech.com  
 IT: Guida per l'uso - it.startech.com  
 NL: Gebruiksaanwijzing - nl.startech.com  
 PT: Guia do usuário - pt.startech.com



\*actual product may vary from photos

### Packaging Contents

- 1x PCI Express USB 3.0 Card
- 1x Low Profile Bracket
- 1x Driver CD
- 1x User Manual

### System Requirements

- Available PCI Express slot
- Windows® 8 (32/64bit), 7 (32/64), Vista(32/64), XP(32/64), Windows® Server 2012, 2008 R2, 2003(32/64), Linux 2.6.31 or later

### Installation

#### Hardware Installation

**WARNING!** PCI Express cards, like all computer equipment, can be severely damaged by static electricity. Be sure that you are properly grounded before opening your computer case or touching your card. StarTech.com recommends that you wear an anti-static strap when installing any computer component. If an anti-static strap is unavailable, discharge yourself of any static electricity build-up by touching a large grounded metal surface (such as the computer case) for several seconds. Also be careful to handle the card by its edges and not the gold connectors.

1. Turn your computer off and any peripherals connected to the computer (i.e. Printers, external hard drives, etc.). Unplug the

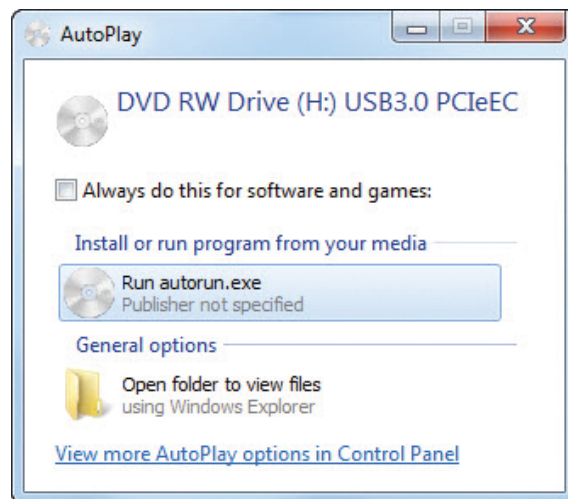
- power cable from the rear of the power supply on the back of the computer and disconnect all peripheral devices.
2. Remove the cover from the computer case. See documentation for your computer system for details.
3. Locate an open PCI Express slot and remove the metal cover plate on the rear of the computer case (Refer to documentation for your computer system for details.). Note that this card will work in PCI Express slots of additional lanes (i.e. x4, x8 or x16 slots).
4. Insert the card into the open PCI Express slot and fasten the bracket to the rear of the case.
 

**NOTE:** If installing the card into a low profile desktop system, replacing the preinstalled standard profile bracket with the included low profile (half height) installation bracket may be necessary.
5. If desired, connect the optional SATA power using an available connector from your power supply.
6. Place the cover back onto the computer case.
7. Insert the power cable into the socket on the power supply and reconnect all other connectors removed in Step 1.

#### Driver Installation

##### Windows

1. Upon starting Windows, if the Found New Hardware wizard appears on the screen, cancel/close the window and insert the included Driver CD into the computer's CD/DVD drive.
2. Run the RENESAS-USB3-Host-Driver-30230-setup.exe application from the Autoplay menu. If Autoplay is disabled on your system, browse to your CD/DVD drive and run the application.



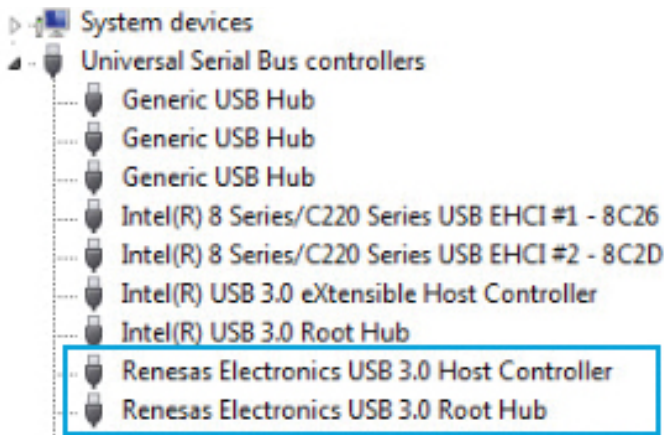
3. Follow the on-screen instructions to complete the installation.
 

**NOTE:** You may be prompted to restart once the install completes.

## Verifying Installation

### Windows

1. Open the Device Manager by right-clicking on Computer, and then select Manage. In the new Computer Management window, select Device Manager from the left window panel (For Windows 8, open the Control Panel and select Device Manager).
2. Expand the "Universal Serial Bus Controllers" section. On a successful install, you should see the "Renesas Electronics USB 3.0 Host Controller" and "Renesas Electronics USB 3.0 Root Hub" in the list with no exclamation points or question marks:



## Specifications

<b>Host Interface</b>	PCI Express 2.0 (x1 slot connector)
<b>Chipset</b>	NEC uPD720202
<b>Number of Ports</b>	2
<b>External Connectors</b>	2x USB 3.0 type A female
<b>Internal Connectors</b>	1x SATA power male
<b>Standards</b>	USB 3.0 rev. 1.0 Intel xHCI rev. 1.0
<b>Maximum Data Transfer Rate</b>	USB 3.0: 5 Gbps
<b>Operating Temperature</b>	5°C ~ 50°C (41°F ~ 122°F)

## FCC Compliance Statement

This equipment has been tested and found to comply with the limits for a Class B digital device, pursuant to part 15 of the FCC Rules. These limits are designed to provide reasonable protection against harmful interference in a residential installation. This equipment generates, uses and can radiate radio frequency energy and, if not installed and used in accordance with the instructions, may cause harmful interference to radio communications. However, there is no guarantee that interference will not occur in a particular installation. If this equipment does cause harmful interference to radio or television reception, which can be determined by turning the equipment off and on, the user is encouraged to try to correct the interference by one or more of the following measures:

- Reorient or relocate the receiving antenna.
- Increase the separation between the equipment and receiver.
- Connect the equipment into an outlet on a circuit different from that to which the receiver is connected.
- Consult the dealer or an experienced radio/TV technician for help.

## Use of Trademarks, Registered Trademarks, and other Protected Names and Symbols

This manual may make reference to trademarks, registered trademarks, and other protected names and/or symbols of third-party companies not related in any way to StarTech.com. Where they occur these references are for illustrative purposes only and do not represent an endorsement of a product or service by StarTech.com, or an endorsement of the product(s) to which this manual applies by the third-party company in question. Regardless of any direct acknowledgement elsewhere in the body of this document, StarTech.com hereby acknowledges that all trademarks, registered trademarks, service marks, and other protected names and/or symbols contained in this manual and related documents are the property of their respective holders.

## Technical Support

StarTech.com's lifetime technical support is an integral part of our commitment to provide industry-leading solutions. If you ever need help with your product, visit [www.startech.com/support](http://www.startech.com/support) and access our comprehensive selection of online tools, documentation, and downloads.

For the latest drivers/software, please visit [www.startech.com/downloads](http://www.startech.com/downloads)

## Warranty Information

This product is backed by a two year warranty.

In addition, StarTech.com warrants its products against defects in materials and workmanship for the periods noted, following the initial date of purchase. During this period, the products may be returned for repair, or replacement with equivalent products at our discretion. The warranty covers parts and labor costs only. StarTech.com does not warrant its products from defects or damages arising from misuse, abuse, alteration, or normal wear and tear.

## Limitation of Liability

In no event shall the liability of StarTech.com Ltd. and StarTech.com USA LLP (or their officers, directors, employees or agents) for any damages (whether direct or indirect, special, punitive, incidental, consequential, or otherwise), loss of profits, loss of business, or any pecuniary loss, arising out of or related to the use of the product exceed the actual price paid for the product. Some states do not allow the exclusion or limitation of incidental or consequential damages. If such laws apply, the limitations or exclusions contained in this statement may not apply to you.