

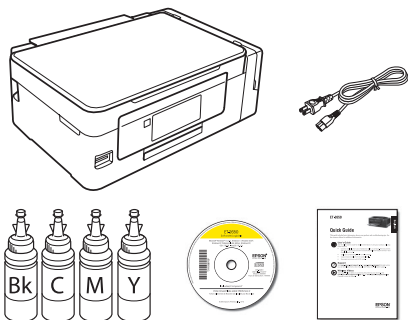
# ET-2650

# Start Here

**Read these instructions before using your product.**

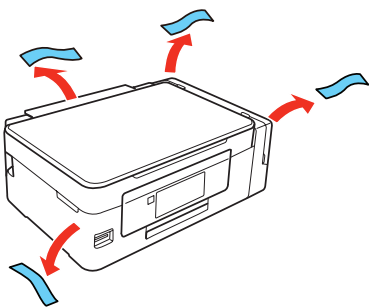
**Note for Spanish speakers/Nota para hispanohablantes:** Para obtener instrucciones de configuración en español, consulte la *Guía de instalación* en [www.epson.com/support/et2650sp](http://www.epson.com/support/et2650sp) (requiere una conexión a Internet).

## 1 Unpack

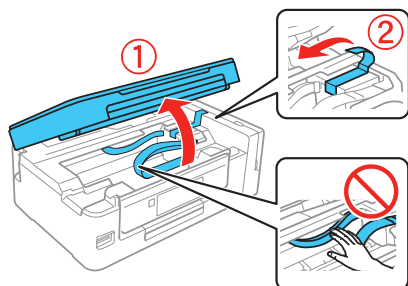


**Note:** Do not open the ink bottles until you are ready to fill the ink tanks. The ink bottles are vacuum packed to maintain reliability. Ink bottle design may vary.

- 1 Remove all protective materials from the product.

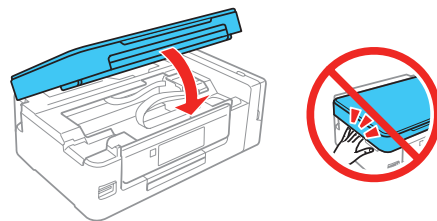


- 2 Lift up the scanner unit and remove all protective materials from inside the product.



**Caution:** Do not touch the flat white cable or the ink tubes and their translucent cover.

- 3 Lower the scanner unit.

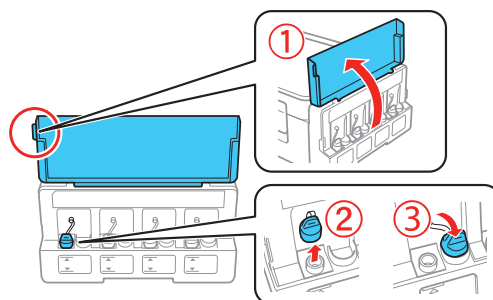


## 2 Fill ink tanks

**Note:** This product requires careful handling of ink. Wear disposable gloves and place a sheet of paper or plastic under the ink tank when you fill or refill the ink tanks, as ink may splatter. If ink spills, wipe it off immediately with a damp towel to avoid permanent stains. If ink gets on your clothes or belongings, it may not come off.

**Warning:** Keep the ink bottles out of the reach of children and do not drink the ink.

- 1 Open the ink tank cover, then remove the cap for the black ink tank and attach it to its holder.



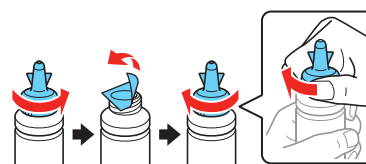
- 2 Unpack the black ink bottle.



- 3 Depending on the ink bottle included with your product, snap off the bottle tip or unscrew the lid.



- 4 Remove the bottle cap. Carefully remove the protective seal (avoid touching the ink underneath the seal), then close the bottle cap tightly.



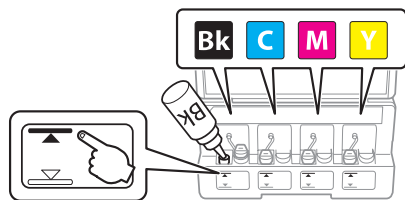
**Caution:** Be sure to close the bottle cap tightly, or ink may leak.



\*413309400\*

**EPSON**  
EXCEED YOUR VISION

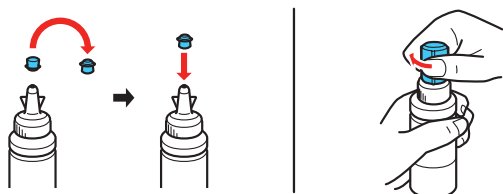
**5** Fill the tank using all of the ink in the bottle.



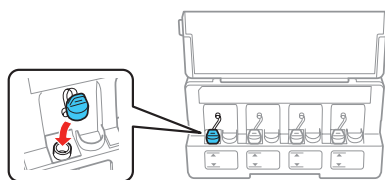
**Note:** Refer to the color coded sticker on the ink tank to identify the color of each tank.

**Caution:** Be sure to fill each tank with the correct ink color.

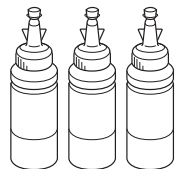
**6** Carefully seal the bottle using the reverse side of the bottle tip or screw on the lid for proper disposal.



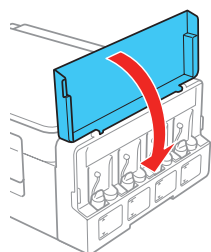
**7** Replace the ink tank cap securely.



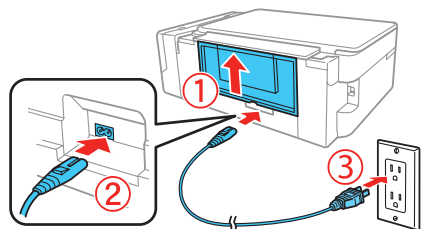
**8** Repeat the previous steps for the remaining bottles.



**9** Close the ink tank cover.

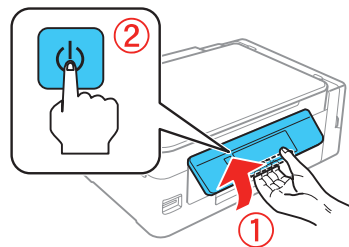


**10** Connect the power cord to the back of the product and to an electrical outlet.



**Caution:** Do not connect to your computer yet.

**11** Raise the control panel and turn on the product, then follow steps 12, 13, and 14 to continue ink charging.



**Note:** If an error message appears, turn off the product and check that no protective material has been left inside the product.

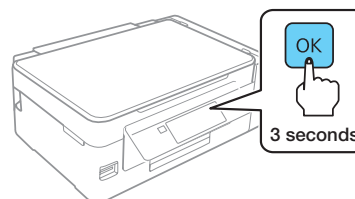
**Caution:** Do not lower the control panel without first squeezing the release bar underneath or you may damage the product.

**12** To select English as your language, press the **OK** button.

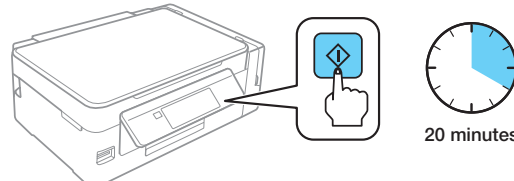
If you want to change the language, press **▲** or **▼** to select it, then press the **OK** button.

**Note:** You can change the language later using the product's control panel. For more information, see the online *User's Guide*.

**13** Press and hold the **OK** button for 3 seconds when the message to see the setup manual is displayed on the LCD screen.



**14** Press the **◊** button to start charging the ink. Ink charging takes approximately 20 minutes. Ink charging is complete when the **⏻** power light stops flashing.

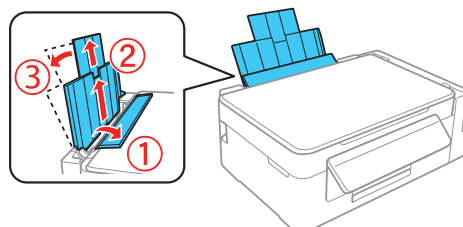


**Note:** The ink bottles included with the printer are designed for printer setup and not for resale. After some ink is used for charging, the rest is available for printing.

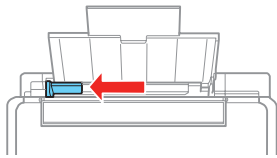
**Caution:** Do not turn off the product or load paper while the product is charging or you'll waste ink.

## 3 Load paper

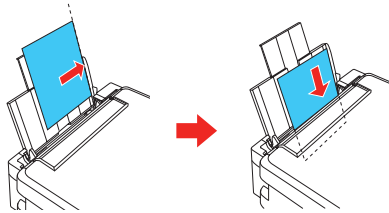
**1** Make sure the product is not charging. Then flip the feeder guard forward, raise the paper support, and tilt it backwards slightly.



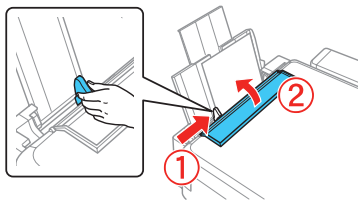
- 2 Slide the edge guide to the left.



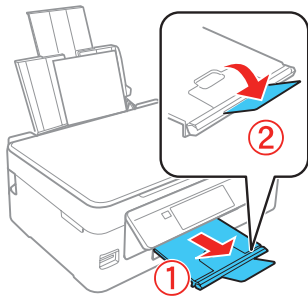
- 3 Load paper, glossy or printable side up and short edge first, against the right side of the rear paper feed slot.



- 4 Slide the edge guide against the paper, but not too tightly, and flip the feeder guard back.



- 5 Pull out the output tray and raise the paper stopper.

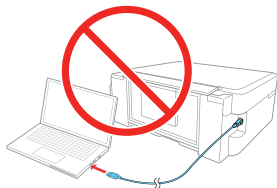


- 6 Select the paper settings on the product's control panel.

## 4 Install software

**Note:** If your computer does not have a CD/DVD drive or you are using a Mac, an Internet connection is required to obtain the product software. To print from a Chromebook™, go to [www.epson.com/support/gcp](http://www.epson.com/support/gcp) (U.S.) or [www.epson.ca/support/gcp](http://www.epson.ca/support/gcp) (Canada) for instructions.

- 1 Make sure the product is **NOT CONNECTED** to your computer.



**Windows®:** If you see a Found New Hardware screen, click **Cancel** and disconnect the USB cable.

- 2 Insert the product CD or download and run your product's software package:

[www.epson.com/support/et2650](http://www.epson.com/support/et2650) (U.S.) or  
[www.epson.ca/support/et2650](http://www.epson.ca/support/et2650) (Canada)

- 3 Follow the instructions on the screen to run the setup program.

- 4 When you see the Select Your Connection screen, select one of the following:

- **Wireless connection**

In most cases, the software installer automatically attempts to set up your wireless connection. If setup is unsuccessful, you may need to enter your network name (SSID) and password.

- **Direct USB connection**

Make sure you have a USB cable (not included).

## Mobile printing options

Connect wirelessly from your smartphone, tablet, or computer. Print documents and photos from across the room or around the world:

- Print directly from your iPhone, iPad, or iPod touch. Simply connect your printer and device to the same network and tap the action icon to select the print option.
- Use Epson Print Enabler (free from Google Play™) with Android™ devices (v4.4 or later). Then connect your printer and device to the same network and tap the menu icon to select the print option.
- Print remotely with Epson Connect™ and Google Cloud Print™. See your online *User's Guide* for instructions or learn more at [www.epsonconnect.com](http://www.epsonconnect.com).

## Any problems?

### Network setup was unsuccessful

- Make sure you select the right network name (SSID).
- Restart your router (turn it off and then on), then try to connect to it again.
- The printer can only connect to a network that supports 2.4 GHz connections. If your router offers both 2.4 GHz and 5 GHz connections, make sure the 2.4 GHz network is enabled.
- If you see a firewall alert message, click **Unblock** or **Allow** to let setup continue.
- If your network has security enabled, make sure you enter your network password (WEP key or WPA passphrase) correctly. Be sure to enter your password in the correct case. Press **⌈** to toggle between upper case letters, lower case letters, numbers, and symbols.

### There are lines or incorrect colors in my printouts

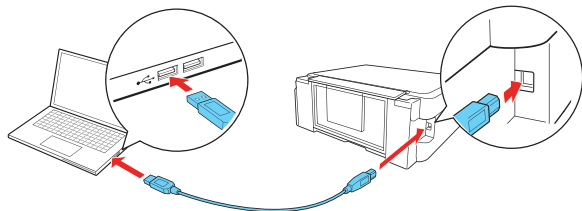
Run a nozzle check to see if any of the print head nozzles are clogged. Then clean the print head, if necessary. See the online *User's Guide* for more information.

## The product's screen is dark

Make sure your product is turned on, and press any button to wake it from sleep mode.

## Setup is unable to find my product after connecting it with a USB cable

Make sure the product is on and securely connected as shown:



## Need paper and ink?





Ensure peak performance and brilliant results with Genuine Epson® Ink and specialty papers, engineered specifically for Epson printers. Find Genuine Epson Ink and specialty papers at [www.epson.com](http://www.epson.com) (U.S. sales) or [www.epson.ca](http://www.epson.ca) (Canadian sales) and at Epson authorized resellers. Call 800-GO-EPSON (800-463-7766).



DESIGNED *for*  
EXCELLENCE™

Epson printers, ink and specialty papers.

### ET-2650 refill inks

Color	Part number
 Black	664
 Cyan	664
 Magenta	664
 Yellow	664



## Any questions?

### Quick Guide

Basic information and troubleshooting.

### User's Guide

**Windows:** Click the icon on your desktop or Apps screen to access the online *User's Guide*.

**Mac:** Click the icon in **Applications/Epson Software/Guide** to access the online *User's Guide*.

If you don't have a User's Guide icon, go to the Epson website, as described below.

### Technical support

Visit [www.epson.com/support](http://www.epson.com/support) (U.S.) or [www.epson.ca/support](http://www.epson.ca/support) (Canada) and search for your product.

(562) 276-4382 (U.S.) or (905) 709-3839 (Canada), 6 AM to 8 PM, Pacific Time, Monday through Friday, and 7 AM to 4 PM, Pacific Time, Saturday. Days and hours of support are subject to change without notice. Toll or long distance charges may apply.

### Recycling

Epson offers a recycling program for end of life hardware and ink bottles. Please go to [www.epson.com/recycle](http://www.epson.com/recycle) for information on how to return your products for proper disposal.



EPSON is a registered trademark, Epson Connect is a trademark, and EPSON Exceed Your Vision is a registered logomark of Seiko Epson Corporation. Designed for Excellence is a trademark of Epson America, Inc.

Mac, iPhone, iPad, and iPod touch are trademarks of Apple Inc., registered in the U.S. and other countries.

Android, Google Cloud Print, Chromebook, and Google Play are trademarks of Google Inc.

General Notice: Other product names used herein are for identification purposes only and may be trademarks of their respective owners. Epson disclaims any and all rights in those marks.

This information is subject to change without notice.

© 2016 Epson America, Inc., 9/16