

## NM-HUB2LIFTSILVER NEOMOUNTS SELECT MOTORISED FLOOR

### SPECIFICATIONS

#### GENERAL

Max. screen size*	50 inch
Min. weight	0 kg (per screen)
Max. weight	150 kg (per screen)
Screens	1
VESA minimum	350x350 mm
VESA maximum	350x350 mm

#### FUNCTIONALITY

Type	Tilt
Height adjustment	134-184 cm
Width adjustment	104 cm
Depth adjustment	74 cm
Tilt (degrees)	15°
Adjustment type	Motorised

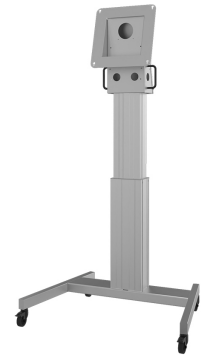
#### INFORMATION

Color	Silver
Main material	Steel
Warranty	5 year
EAN code	8717371448059

\*Please note: The inch sizes stated are just an indication, combined with the weight and VESA sizes. The maximum weight and VESA size are absolute restrictions for the products and should not be exceeded.



Neomounts



Neomounts

### Neomounts Select NM-HUB2LIFTSILVER Motorised Trolley for 50" Microsoft Hub 2S(X), Height Adjustable - Black

The Neomounts Select NM-HUB2LIFTSILVER motorised height adjustable floor stand is specifically designed to make your Microsoft Surface Hub 2S(X) screen as versatile as it was designed for. With the attached handles the cart can easily be moved on and through different work spaces.

The NM-HUB2LIFTSILVER can be automatically lifted in height by the push of a button. The stand can be lowered for collaboration and videoconferencing purposes, or raised for huddle meetings. The mount has a stepless electronic height adjustment of 50 cm by (wired) remote control.

The mount is fitted with a, for the Microsoft Surface Hub 2S(X), custom designed head that has a tilt of 0 degrees, or 15 degrees, optimized for anti-glare and multiple viewing angles. The trolley is suitable for screens with a VESA hole pattern of 350x350 mm. The NM-HUB2LIFTSILVER from the Neomounts Select lineup has a variable height adjustment from floor-to-center-screen of 134 cm to 184 cm.

With the NM-HUB2LIFTSILVER you have the most options to complement the Microsoft Surface Hub 2S(X) screen.

The trolley features four solid castor wheels, of which the two front wheels are equipped with a brake.