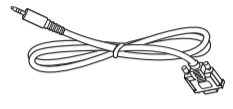
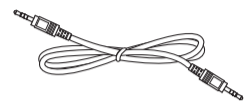


Power cord



RS232 Cable



RS232 Daisy Chain Cable



IR Sensor Cable



HDMI Cable



Dipole Antenna x2



SD card cover



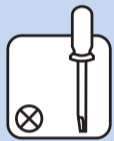
M3



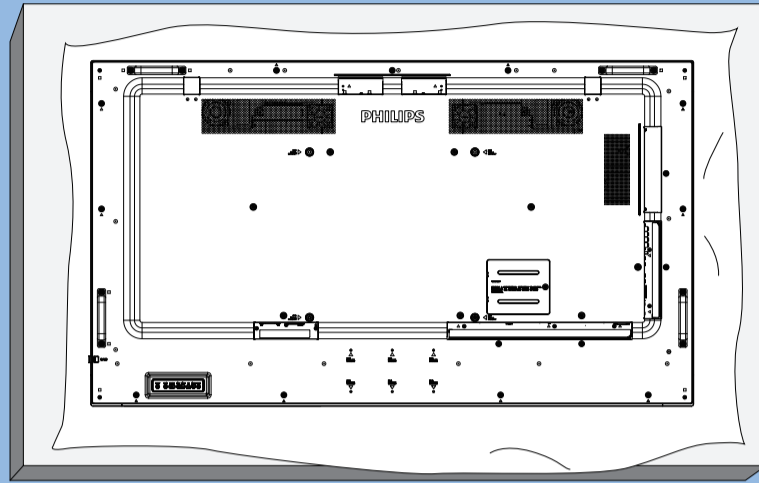
M2

* Differences according to regions.

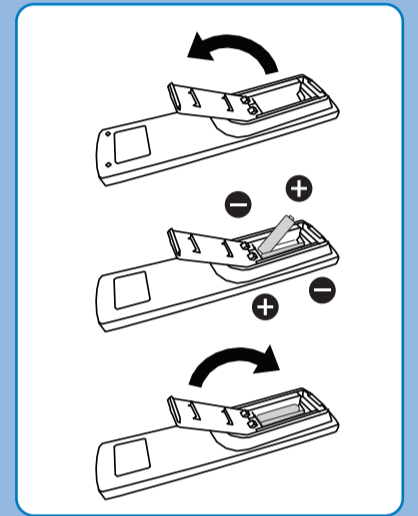
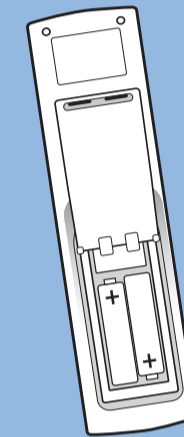
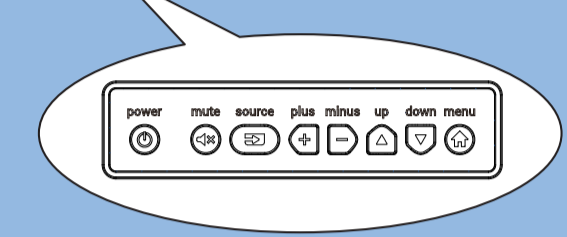
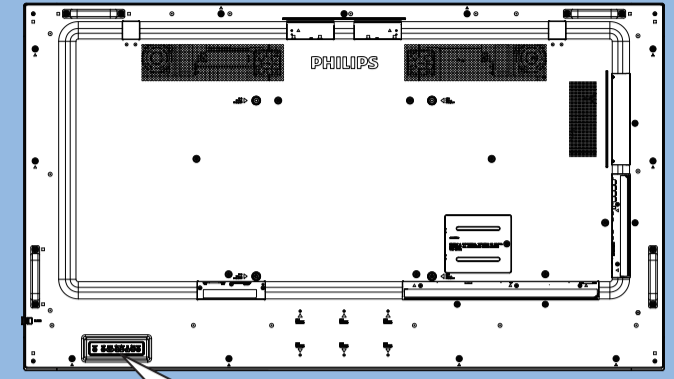
Display design and accessories may differ from those illustrated above.



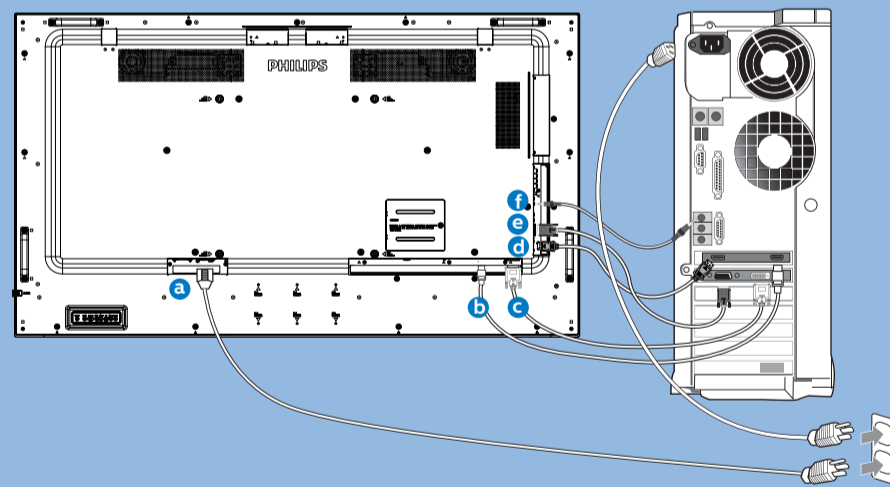
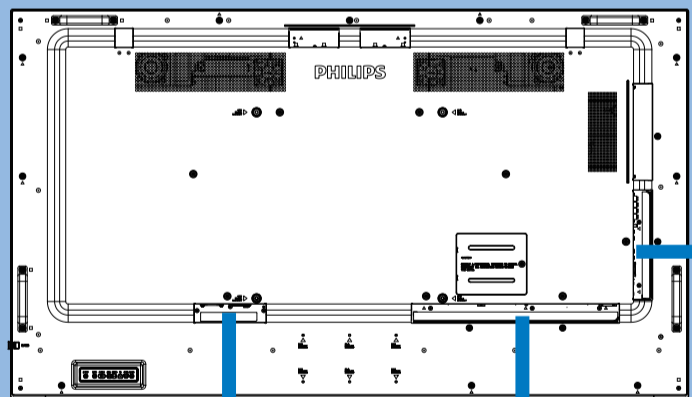
1



2



3



AC IN



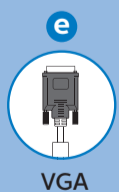
HDMI



DVI



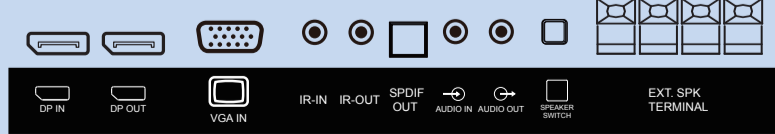
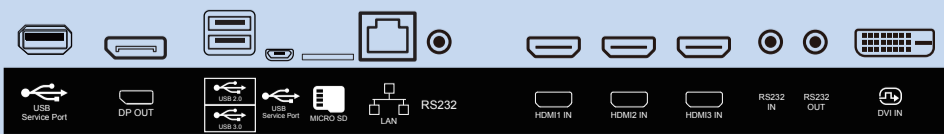
DP



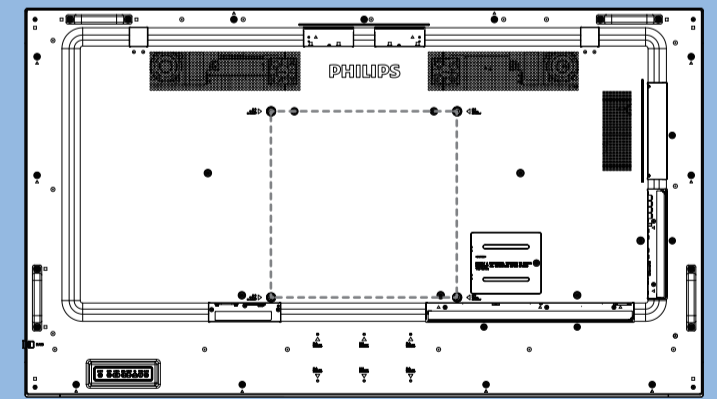
VGA



AUDIO



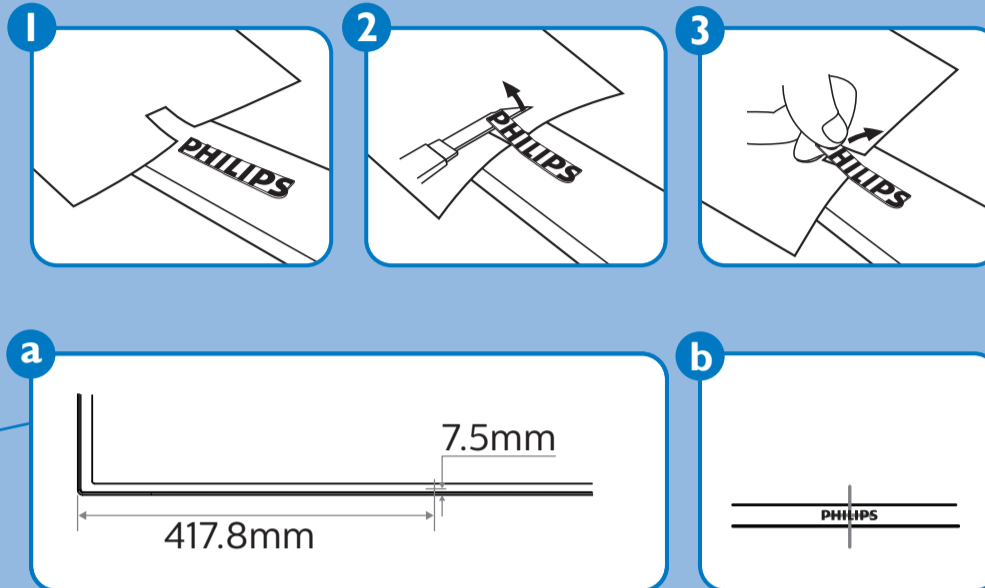
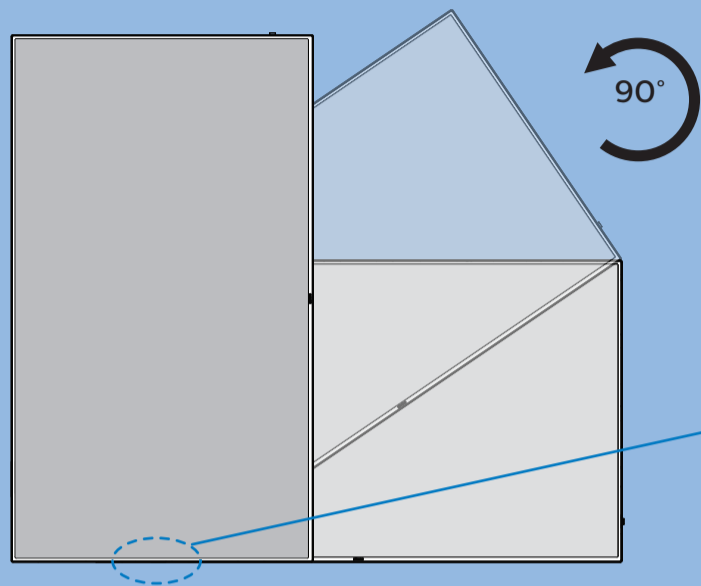
4



M6 * (10+X) mm
(X=Thickness of Wall mount BKT)

65BDL4150D: 400mmx400mm

5



Quick Start



Please check out the website below for more product information.
www.philips.com/signagesolutions-support



Envision Peripherals Inc.
490 N McCarthy Blvd, Suite #120
Milpitas, CA 95035
USA

© 2019 Koninklijke Philips N.V. All rights reserved.
Philips and the Philips Shield Emblem are registered
trademarks of Koninklijke Philips N.V. and are used under
license from Koninklijke Philips N.V.

Specifications are subject to change without notice.
Version: V1.00 2019-01-25



Q41G65M181320A